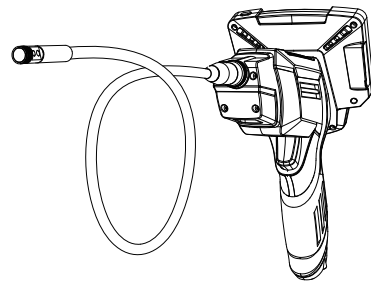


折页
印刷1000份
尺寸:5.5cm*11.5cm

Industrial endoscope



User Manual

EN
112

Welcome to buy this product, please read the manual carefully before use, and keep it for emergency.

Feature:

- 1080P resolution: 1080P HD camera and 4.3-inch IPS screen. The screen captures more detail and provides you with the best picture experience.
- Video and photo: The device can capture high-definition photos and videos, and save stored in the SD card.
- Focal Length: The focal length is 2-10 cm.
- High intensity auxiliary lights: 6 adjustable LED lights for easy use in dark environments.
- IP67 Waterproof: The device is equipped with a semi-rigid waterproof cable that can withstand use in wet environments.

Application:

- Pipe/Water mains cleaning: After inspecting the pipes, it helps to clean, rust, corrosion, dust and cracks.
- Shipbuilding: For inspection of boilers, steam turbines, diesel engines, pipes.
- Industrial machinery: Used to check for engine scars or wear, gearboxes, hydraulic systems, and drastically reduce downtime.
- Electronics industry: Used to confirm the wiring status of products, check machines working status, etc.

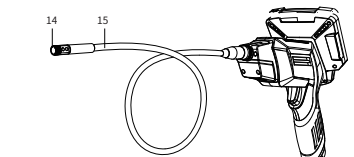
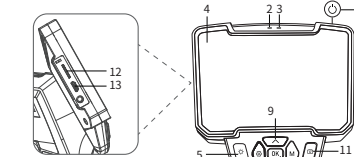
Parts List:

- LCD Digital Endoscope
- User Manual
- USB Cable
- Accessories - Hooks, Magnets, Protective Caps

CN-1

Button Introduction:

(1) Part Names and Functions



- | | |
|----------------------|----------------------------------|
| ■ Power button | ■ Mode switching |
| ■ Charging indicator | ■ Taking photos |
| ■ Work indicator | ■ Micro TF card slot |
| ■ 4.3 inch screen | ■ DC 5V input |
| ■ Adjust the light | ■ Side mirror auxiliary lighting |
| ■ Setting key | ■ Side mirror |
| ■ Down selection key | ■ Front mirror |
| ■ Enter | ■ Hardwire |
| ■ Up selection key | |

CN-2

(2) Parts Description

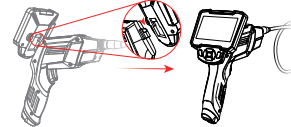
- Power button: Press and hold for 3 seconds to switch on and off the machine.
- Charging indicator light: Red light when charging, and goes out when fully charged.
- Work indicator: After the device is turned on, the work indicator is always on in blue.
- 4.3-inch display screen: 4.3-inch full-color LCD screen, you can view the video in real time.
- Light adjustment key: Camera light adjustment (100%-80%-60%)
- Setting key: (1) Set (2) Return
- Down button: (1) Scroll down (2) Rotate the screen 180 degrees
- Confirmation key: (1) Confirmation key (2) Screen freezes
- Up button: (1) Turn up (2) Zoom in (1X-1.3X-1.5X)
- Mode key: switch between three function modes of photo, video and album.
- Photo key: (1) Take photo (2) Start recording video (3) End recording video (4) If the configuration is dual lens, long press to switch the camera
- Micro TF card slot: Support up to 64GB MicroTF card, only support Class 10 or higher FAT32 formatted TF card (regular shipment not with TF card).
- DC 5V input: USB cable charging interface
- Camera: Screen view
- Hardwire: Semi-rigid hardwire, free to bend in shape.

CN-3

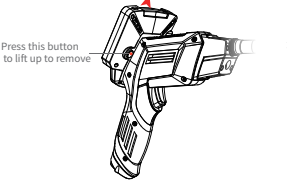
INSTALLATION STEPS:

(1) Host installation

- Installation: Align the connector on the back of the display with the connector on the handle, and then insert the connector of the back of the display and the connector of the host in the direction of the arrow, as shown in the following figure:



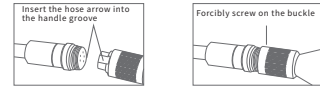
- Disassembly: first hold the handle with your hand, then pull the trigger on the back of the host up and then pull it up, you can easily disassemble the host, as shown in the following figure:



CN-4

(2) Hose Installation

Install the flexible tube onto the handle by first making sure that the hose arrow is aligned with the arrow groove of the handle and forcibly connecting the two parts



(3) Accessories installation:

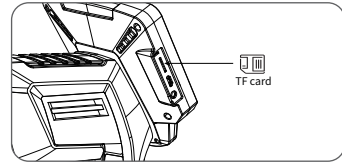
The accessories are installed as shown below:



STEPS FOR USAGE:

(1) Basic operation

- Insert the MicroTF card (normally not equipped) into the MicroTF card slot and press gently until the TF card is locked. (Note: MicroTF cards of Class 10 or higher must be inserted to record and store pictures and videos).



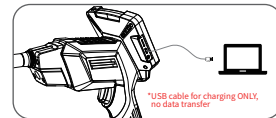
CN-5

- Press and hold the 3s power / set button to turn on the device, then press the light adjustment / up button to adjust the brightness of the lens.
- Press "M" to switch to take photo or video, press "G" to take photo or video.
- Press "M" to switch to photo album viewing, select the photo or video that you want to view, press "G" to delete the photo or video.

CHARGING:

When the power is low or the low power automatically shuts down, you need to use the power adapter to charge the device. The adapter needs to use the specified 5V / 1A (when charging, the device display and handle must be connected).

When the battery is charging, the device's charging indicator will be red. After the battery is fully charged, the charging indicator will turn off. The entire charging process is about 2.5 hours. It can be used for 3 hours when fully charged (Note: When the device is completely discharged, charge it must be at least 1 hour before it can be used normally).



CN-6

TECHNICAL PARAMETERS:

Model	112
Monitor	4.3-inch color LCD
Resolution	1920*1080P
Front / side lens	70° / 70°
Language	Simplified Chinese, Japanese, English, Korean, French, German, Italian, Spanish, Russian, Polish
Focal length	2CM-10CM
Waterproof level	IP67 (only for lens/lamp)
Lens diameter	8mm
Battery capacity	2000mAh
Battery endurance	About 3 hours

TROUBLESHOOTING:

Problem	Solution
Device cannot be turned on	1. Use after fully charging the battery 2. Confirm that the power supply is successfully connected
TF card reading is unsuccessful	1. Is the memory card format correct? (This device only supports FAT32 file format) 2. Re-insert the TF card after removing it
After the device is connected to the PC, the TF card cannot be read.	1. Reconnect the device and PC 2. Confirm whether to enter the Mass Storage mode
Device crash	1. Plug in the USB data cable to charge, automatically shut down, then press the power button to reset
Smudged or smeared on the screen	1. Carefully clean the screen with a soft cloth

CE RoHS

CN-7